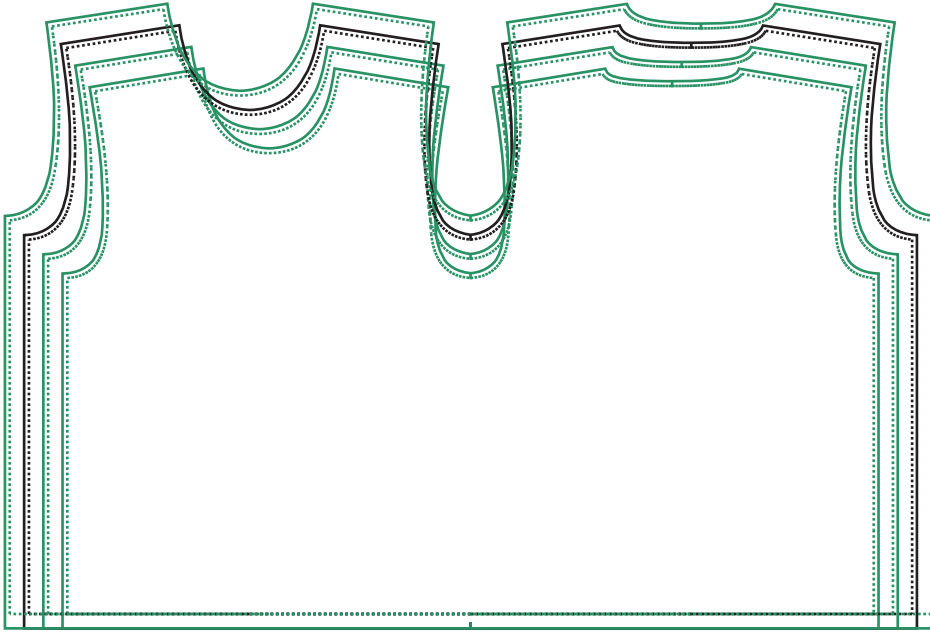


# CLASSIC SS - SEAMLESS MEN's SIMILIXL



**FRONT**

**BACK**

*This form is intended for the purpose of laying out print specifications for sublimated jersey designs.*

*If you are planning on ordering various sizes of this sublimated jersey, please make sure that the key components of the design will fit within the parameters of each size shown.*

*The dotted lines denote where the various pieces will be sewn together. Please ensure that the outer edges of the design bleed to/past the solid lines, which represent the edges of the material.*

*Pattern pieces are 10% of actual 1000% size. Make sure to place all artwork within the XS outline if ordering small sizes.*

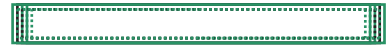
*Note, if using JPEG images, include the image in a separate file that is at least 300 dpi and true size at 1000%.*

*When setting up artwork, please insure you use Pantones from the Solid Coated Library, not CMYK.*

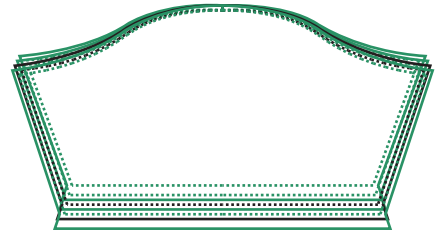
*Please only use live traced artwork if the object is simple, complicated art does not live trace well and there is not guarantee that it will turn out as intended.*

*Remember that these diagrams are representations of actual pattern pieces, and that the outer edges of each piece will be curving around torsos and limbs.*

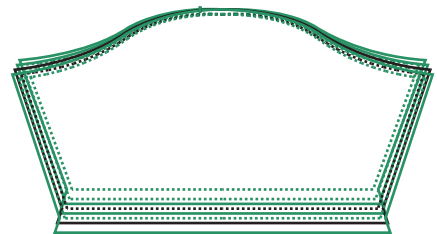
*When you are ready to submit this form, please email a .pdf or .ai copy to your customer sales representative.v*



**COLLAR**



**LEFT SLEEVE**



**RIGHT SLEEVE**