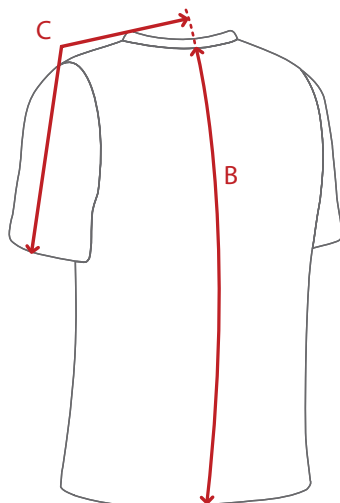
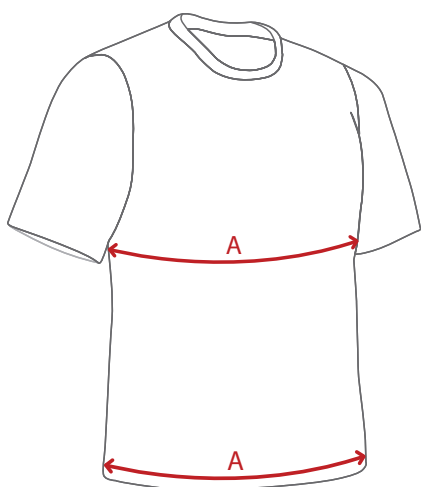


VC Card Deals - Garment Sizing and Sizing Notes

TOPS

** Please verify your size - we have modified the fit of our VC Card Deal jerseys **



*Measurements are taken from the same place for men's and women's sizes

MEASUREMENTS (All measurements are in inches)

A... Chest and Hem - This is the measurement all the way around your chest and waist. Standing up straight, run a measuring tape right around your chest, just below your arms, and again right around your bare waist. Give an inch or 2 between the tape and your body, depending on what fit you are looking for.

B... CenterBack Length - This measurement is taken on the back of the shirt from the top of the collar to the bottom of the hemline. Stand up straight and measure from the middle of the back of your neck to just above your bum.

C... Sleeve Length - This is the measurement taken from the CB mark to the shoulder seam and down to the bottom of the sleeve hem. With relaxed arms, measure from the center of the back of your neck, over the shoulder and down to your bicep, or wrist (for LS jerseys).

Sizing note:

VC Men's jerseys tend to run large and loose, so that the jerseys hang loose and away from the body. Go a size down if you are looking for a closer fit.

Women's jerseys are fitted, and hang closer to the body. Go a size up if you are looking for a roomier fit.

Men's/Unisex Jerseys

ShortSleeve	XS	S	M	L	XL
Chest and Hem (A)	39	41	43	45	47
CB - Length (B)	26 3/4	27 1/4	27 3/4	28 1/4	28 3/4
Sleeve Length (C)	18	18 1/2	19	19 1/2	20

LongSleeve	XS	S	M	L	XL
Chest and Hem (A)	39	41	43	45	47
CB - Length (B)	26 3/4	27 1/4	27 3/4	28 1/4	30 1/2
Sleeve Length (C)	33 1/2	34	34 1/2	35	35 1/2

Ripper	XS	S	M	L	XL
Chest and Hem (A)	39	41	43	45	47
CB - Length (B)	26 3/4	27 1/2	28	28 1/2	29
Sleeve Length (C)	33 1/2	34	34 1/2	35	35 1/2

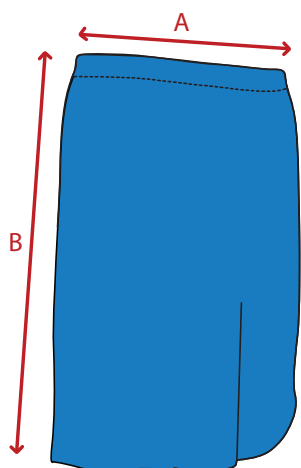
Women's Jerseys

ShortSleeve	XS	S	M	L	XL
Chest (A)	32	34	36	38	40
Hem (A)	33	35	37	39	41
CB - Length (B)	24 1/2	25	25 1/2	26	26 1/2
Sleeve Length (C)	14 1/4	14 3/4	15 1/4	15 3/4	16 1/4

LongSleeve	XS	S	M	L	XL
Chest (A)	32	34	36	38	40
Hem (A)	33	35	37	39	41
CB - Length (B)	24 1/2	25	25 1/2	26	26 1/2
Sleeve Length (C)	31 1/2	32	32 1/2	33	33 1/2

Ripper	XS	S	M	L	XL
Chest (A)	32	34	36	38	40
Hem (A)	32	34	36	38	40
CB - Length (B)	24 1/2	25	25 1/2	26	26 1/2
Sleeve Length (C)	31 1/2	32	32 1/2	33	33 1/2

BOTTOMS



MEASUREMENTS (All measurements are in inches)

A... Waist - Elastic - This is the measurement of the elastic that runs all the way around the short. The short can stretch to accommodate a larger waist, and you should choose your size based on how snug you like your bottoms. We recommend ordering an inch or 2 less than your waist size. We make XXL and XXXL as well...

B... Side Length - This measurement is taken from the top of the waist to the bottom of the shorts. It's the overall length of the short, and is proportional to the waist size as well. Your best bet is to measure some of your favourite shorts, to make sure that you are getting the correct length.

Sizing note:

These GOAT shorts are made with the FlexLight material - lightweight, smooth, stretchy and soft with a matte finish.

They are longer in length than previous VC styles and wide in the legs allowing maximum room for running and pivoting....

GOAT shorts	XS	S	M	L	XL
Waist - Elastic (A)	24	26	28	30	32
Side Length (B)	20	20 1/2	21	21 1/2	22